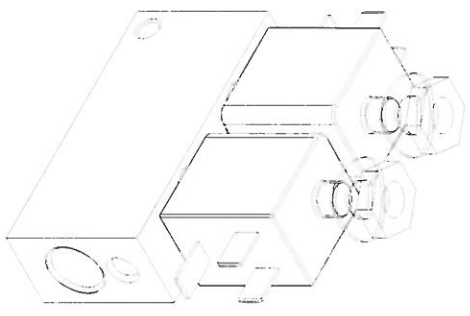
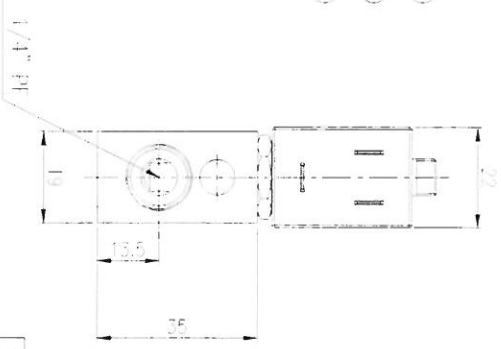
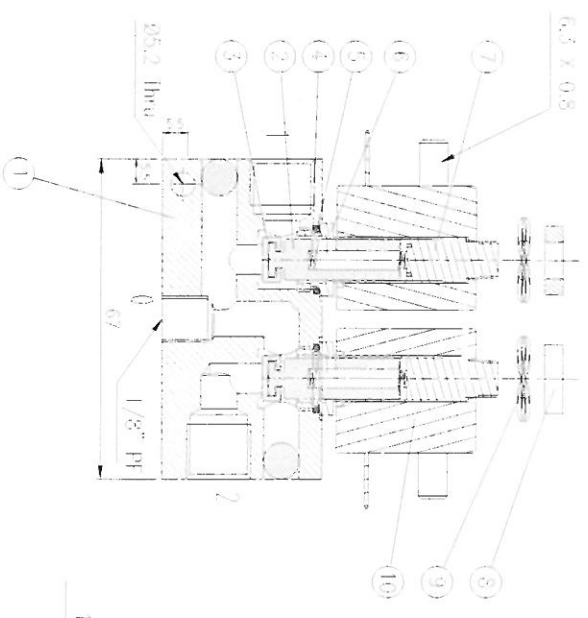
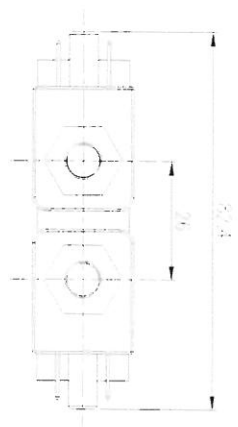
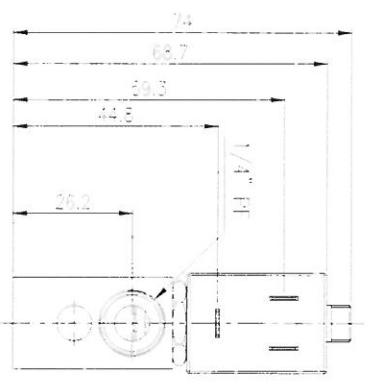
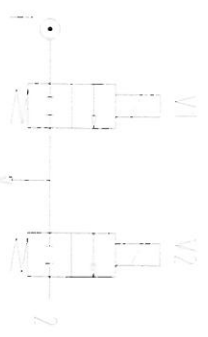


## SPECIFICATION

### Parker Hannifan Double Block Solenoid Valve

<b>Certificate holder</b>	Techrite Controls Australia Pty Ltd 12 Yiannis Court Springvale Vic 3171	
<b>Certificate number</b>		<b>Date</b>
<b>Model</b>	121M	
<b>Coils</b>	ASO2L	
<b>Voltages</b>	220/230, 110/115, 24 VAC 4 Watt 12, 24 VDC 5 Watt	
<b>Rated Working Pressure</b>	20 kPa	
<b>Temperature Limitations</b>	-10 to + 65 degrees C	
<b>Mounting Limitations</b>	Multi position	
<b>Class</b>	1	
<b>Max Flow</b>	1.5 M3 (Air) at 1 Kpa pressure drop	
<b>Connection Threads</b>	¼" BSP inlet and outlet	
<b>Orifice</b>	6.6 mm	



REV	DATE	DESCRIPTION	BY	CHK
1	2012.09.19	NEW DRAWING	H.J.PARK	S.H.SHRI
2	2012.09.19	CHANGED	H.J.PARK	S.H.SHRI

\* Unless otherwise specified, all dimensions are in mm.  
 • Corner and fillet sharp, chamfer 0.2mm radius or chamfer.  
 • Rounded surfaces: R2, R3mm, R6mm.

GLOBAL TAG	USED G/L

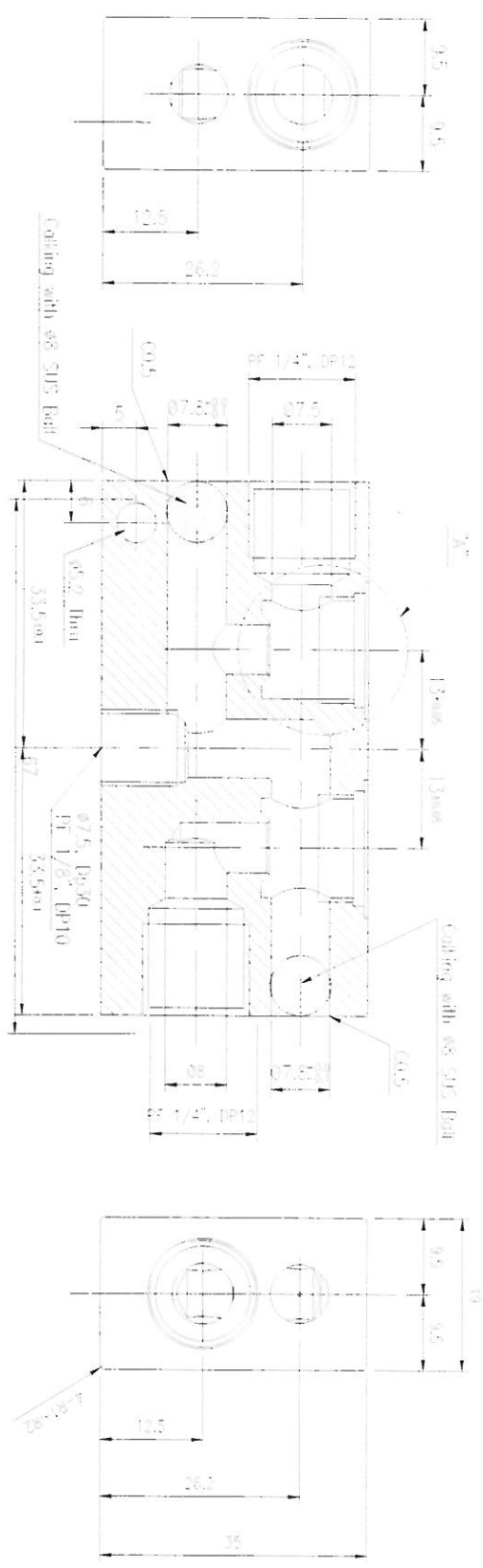
Part	Qty	Part No.	Part Name	Unit
1	1	1000000000	SOLENOID VALVE	UNIT
2	1	1000000000	SOLENOID VALVE	UNIT

Part	Qty	Part No.	Part Name	Unit
1	1	1000000000	SOLENOID VALVE	UNIT
2	1	1000000000	SOLENOID VALVE	UNIT

Part	Qty	Part No.	Part Name	Unit
10	1	1000000000	SOLENOID VALVE	UNIT
9	1	1000000000	SOLENOID VALVE	UNIT
8	1	1000000000	SOLENOID VALVE	UNIT

SHIN-DAI PARKER KOREA LTD

1. BODY (scale = 1:1)

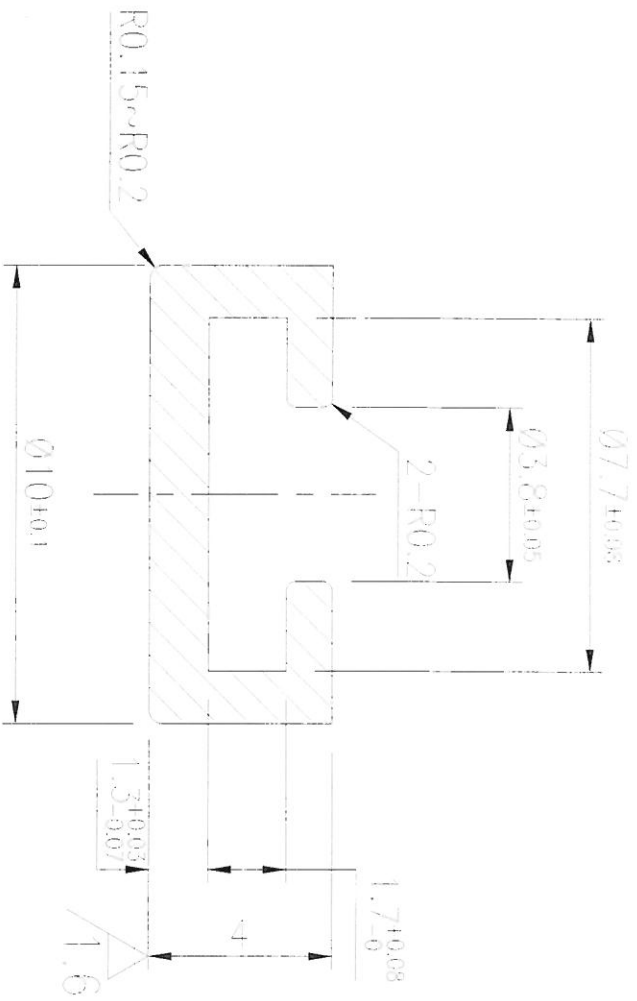


2. 8mm SUS Ball (1:1)



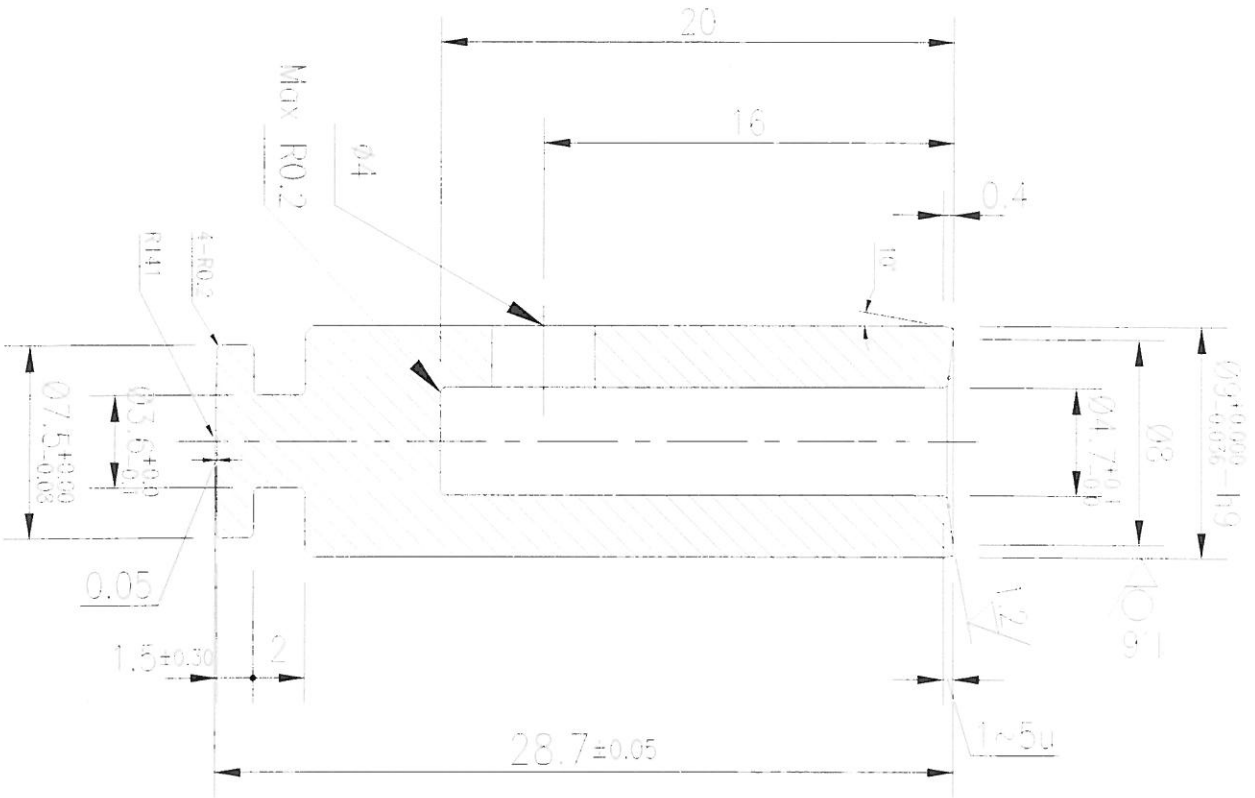
1. 가공 후 Gold 아노다이징 처리할 것.
2. SUS Ball 염색을 내장코드는 5161/5012, 10mm이하 권장 것.
3. 염색된 SUS Ball은 외부로 노출되지 않을 것.

ITEM	PART NO.	SUS BALL	2	SUS304																																								
1	---	BODY	1	C5771B																																								
<table border="1"> <thead> <tr> <th>ITEM</th> <th>PART NO.</th> <th>DESCRIPTION</th> <th>QTY</th> <th>REMARK</th> </tr> </thead> <tbody> <tr> <td>1000 ~ 2000</td> <td>0.5</td> <td>1.2</td> <td>3</td> <td></td> </tr> <tr> <td>315 ~ 1000</td> <td>0.3</td> <td>0.8</td> <td>2</td> <td></td> </tr> <tr> <td>120 ~ 315</td> <td>0.1</td> <td>0.5</td> <td></td> <td></td> </tr> <tr> <td>30 ~ 120</td> <td>0.05</td> <td>0.3</td> <td>0.6</td> <td></td> </tr> <tr> <td>6 ~ 30</td> <td>0.02</td> <td>0.2</td> <td>0.5</td> <td></td> </tr> <tr> <td>3 ~ 6</td> <td>0.01</td> <td>0.1</td> <td>0.2</td> <td></td> </tr> <tr> <td>0.5 ~ 3</td> <td>0.005</td> <td>0.1</td> <td>-</td> <td></td> </tr> </tbody> </table>					ITEM	PART NO.	DESCRIPTION	QTY	REMARK	1000 ~ 2000	0.5	1.2	3		315 ~ 1000	0.3	0.8	2		120 ~ 315	0.1	0.5			30 ~ 120	0.05	0.3	0.6		6 ~ 30	0.02	0.2	0.5		3 ~ 6	0.01	0.1	0.2		0.5 ~ 3	0.005	0.1	-	
ITEM	PART NO.	DESCRIPTION	QTY	REMARK																																								
1000 ~ 2000	0.5	1.2	3																																									
315 ~ 1000	0.3	0.8	2																																									
120 ~ 315	0.1	0.5																																										
30 ~ 120	0.05	0.3	0.6																																									
6 ~ 30	0.02	0.2	0.5																																									
3 ~ 6	0.01	0.1	0.2																																									
0.5 ~ 3	0.005	0.1	-																																									
TOLERANCE (mm)		1 st	2 nd	3 rd																																								
TOLERANCE (μm)		1 st	2 nd	3 rd																																								
DESIGNED BY		CHECKED BY		APPROVED BY																																								
H.J. PARK		H.J. PARK		S.H. SHIN																																								
DATE: Sep.17.2012		DATE: Sep.17.2012		DATE: Sep.17.2012																																								
<b>PARKER KOREA LTD.</b>																																												



1. Hardness: 70±5 (Shore-A)
2. Max Burr size : 0.1

1689 ~ 2000	0.5	1.2	3	UNIT :	DATE	FKM2170	5RD ANGLE	SCALE
315 ~ 1000	0.5	0.8	2	mm	REAL		PROJECTION	1:1
150 ~ 315	0	0.5	1	PART	DISK	LMC		
30 ~ 120	0.05	0.3	0.8	NAME		NO		
6 ~ 30	0	0.2	0.5	DESIGNED BY	H.J. PARK	CHECKED BY	H.J. PARK	APPROVED BY
3 ~ 6	0.05	0.1	0.2	DATE	JUN.19.2012	DATE	JUN.19.2012	DATE
0.5 ~ 3	0.05	0.1	-	DESIGNED BY	H.J. PARK	CHECKED BY	H.J. PARK	APPROVED BY
PRECISION	1 st	2 nd	3 rd	DATE	JUN.19.2012	DATE	JUN.19.2012	DATE
(mm)	TOLERANCE (±)			<b>PARKER KOREA LTD.</b>				



DIMENSION (mm)	TOLERANCE (H)		
	1st	2nd	3rd
1000 ~ 3000	0.5	1.2	3
515 ~ 1000	0.3	0.8	2
170 ~ 515	0.2	0.5	1
50 ~ 170	0.15	0.3	0.8
6 ~ 50	0.1	0.2	0.5
3 ~ 6	0.05	0.1	0.2
0.5 ~ 3	0.005	0.1	-

DESIGNED BY	CHECKED BY	APPROVED BY
H.J. PARK	H.J. PARK	H.J. PARK
DATE	DATE	DATE
AUG.10.2012	AUG.10.2012	AUG.10.2012

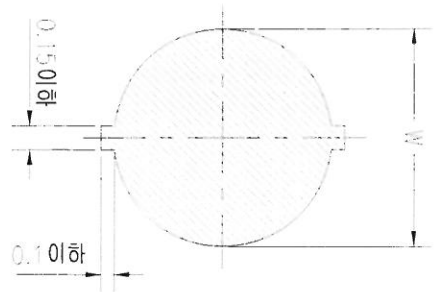
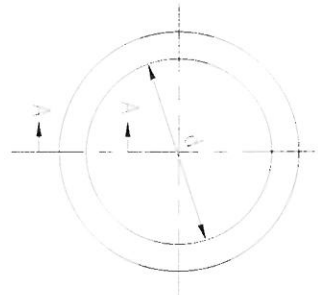
UNIT :	DATE	3RD angle	SCALE
mm	RVAL	ASUFR	PROJECTION
PART NAME	PLUNGER	DWG. NO	O-200791-010

DATE	SCALE
AUG.10.2012	1:1

**PARKER** PARKER KOREA LTD.



SECTION A-A

▷ SPECIFICATION

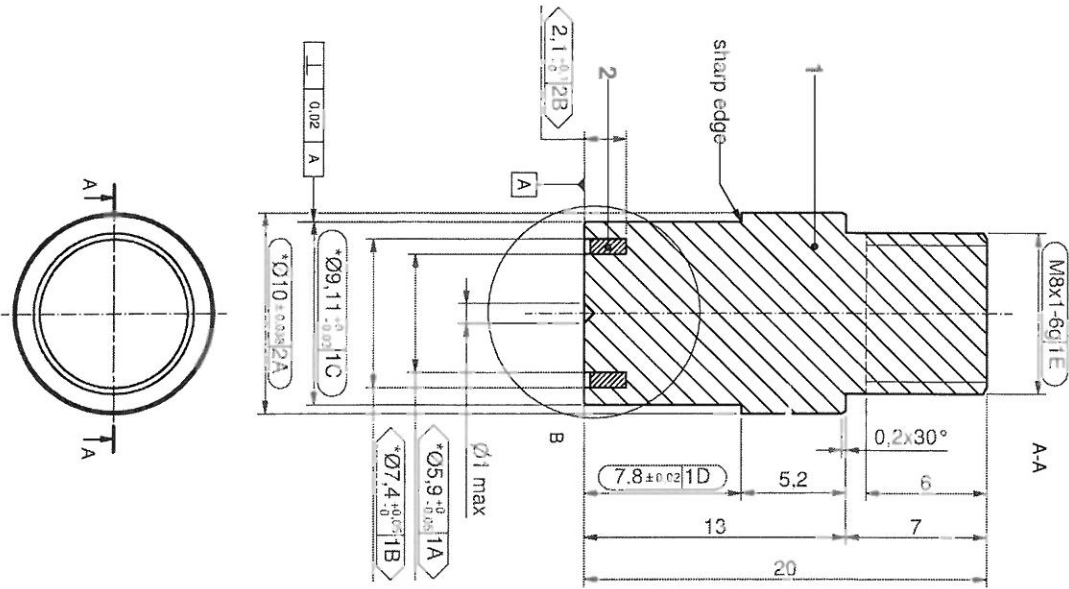
DWG. NO.	규격 (W)		내경 (d)		HARDNESS (SHORE A)	COLOR
	기본치수	허용오차	기본치수	허용오차		
G-200760-001	1.78	±0.07	3.68	±0.12	80±5	흰색
G-200760-002	1.78	±0.07	41.0	±0.12	80±5	흰색
G-200760-005	1.78	±0.07	10.82	±0.12	80±5	흰색
G-200760-004	2.62	±0.07	17.12	±0.12	80±5	흰색

QTY	REV	DATE	DESCRIPTION	USED ON	DIAMETER (mm)			UNIT	MATERIAL	F.T.M	DWG. NO.	REP. APPL. PRODUCTION	SCALE
					1 st	2 nd	3 rd						
0	—	Mar 27, 12	New registration	HJF PHL	1000 ~ 2000	0.5	1.2	3					
					315 ~ 1060	0.5	0.8	2					
					120 ~ 315	0.5	0.5	1					
					30 ~ 120	0.15	0.3	0.8					
					6 ~ 30	0.1	0.2	0.5					
					3 ~ 6	0.05	0.1	0.2					
					0.5 ~ 3	0.05	0.1	—					
Unless otherwise specified • Corners and fillets sharp without 2) radius or chamfer • Machined surfaces : 25 RMS finish					(a) Add (not to Dim. show) (Diameter) (b) Subtract (not from Dim. show) (Groove)			DESIGNED BY: H.J. PARK CHECKED BY: H.J. PARK DATE: Mar. 27, 2012					

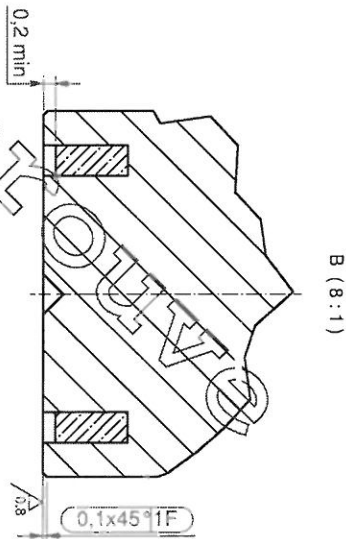
THIS DOCUMENT CONTAINS INFORMATION THAT IS CONFIDENTIAL AND PROPRIETARY TO PARKER. THIS DOCUMENT IS FURNISHED ON THE UNDERSTANDING THAT THE DOCUMENT AND THE INFORMATION IT CONTAINS WILL NOT BE COPIED OR DISCLOSED TO OTHERS OR USED FOR ANY PURPOSE OTHER THAN CONDUCTING BUSINESS WITH PARKER, AND WILL BE RETURNED AND ALL FURTHER USE DISCONTINUED UPON REQUEST BY PARKER. COPYRIGHT PARKER, YEAR OF COPYRIGHT IS FIRST YEAR INDICATED ON THIS DOCUMENT. ALL RIGHTS RESERVED.

General tolerance: ISO 2768-m	Symbol of control internal: $\text{XC}$ external: $\text{XC}$	X = number: 1-critical 2-important	$\alpha$ = letter: sequence of control	Control dimension
----------------------------------	---	--	---	-------------------

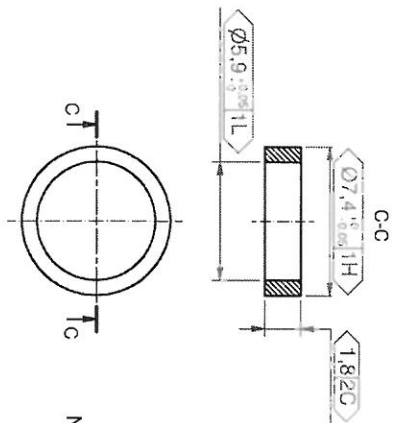
### 1. STOP ASSEMBLY



Diameters with \* must be concentric - concentricity  $\pm 0.05$  mm



### 2. SHADING RING



Scale 1:1

N.B.: Burrs free

N.B.: all surface  $\sqrt{0.8}$  burrs free and the rounded edges with R minimum, where not indicated.  
Where not indicated R=0.2



Scale 1:1

Pos.	N pos	Description	Material	Notes
2	1	Shading ring	Cu 99,9 %	Annealed
1	1	Stop	AISI 430FR (410SS)	Stop alternative material: IMRE 1.4105 / Chrome core 18-FM

Revision	Level	Date	Description	Check by
05		05.12.2009	Update title block following Global Procedure D3-506 revision B.	GRP
04		04.20.2009	New title block and drawing as per Global Procedure D3-506, revised stop material.	GRP

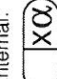
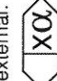
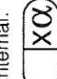
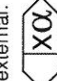
  

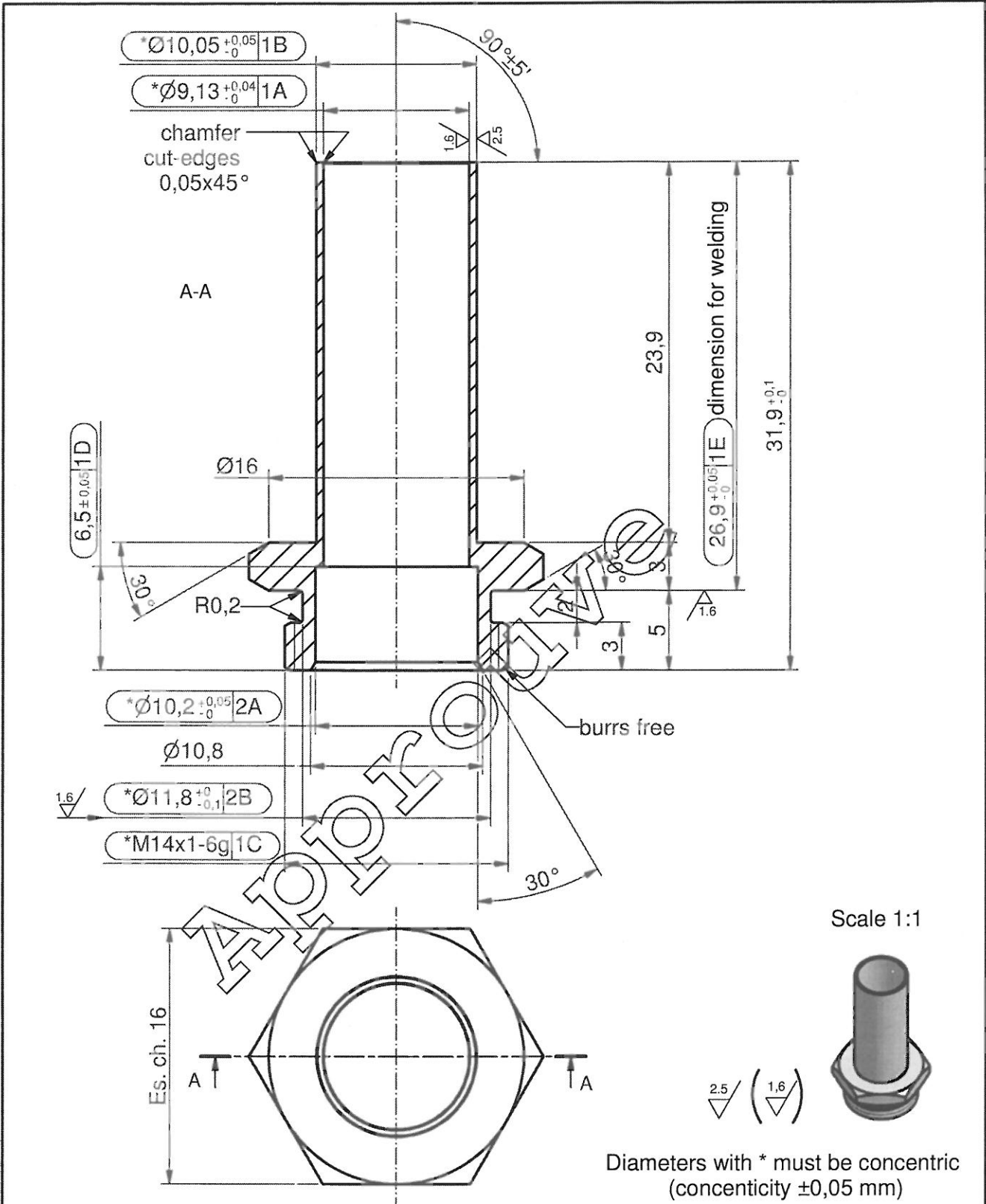
Original: 430422	Scale: 4 : 1	Material: See table	ECN/EGR N°	Check by
Owner: G	Format: A3	Treatment: -	Drawn by: GRP	Date: 04.29.2008
Part designation	Part N°/Dw N°		Check by: AVL	Date: 04.29.2008


  

<b>Parker</b>	<b>Stop assy - type 2</b>	<b>G</b>	<b>430422</b>	<b>05</b>
CIC - FLUID CONTROL DIVISION	2 way	First user	Part N°/Dw N°	Part Rev

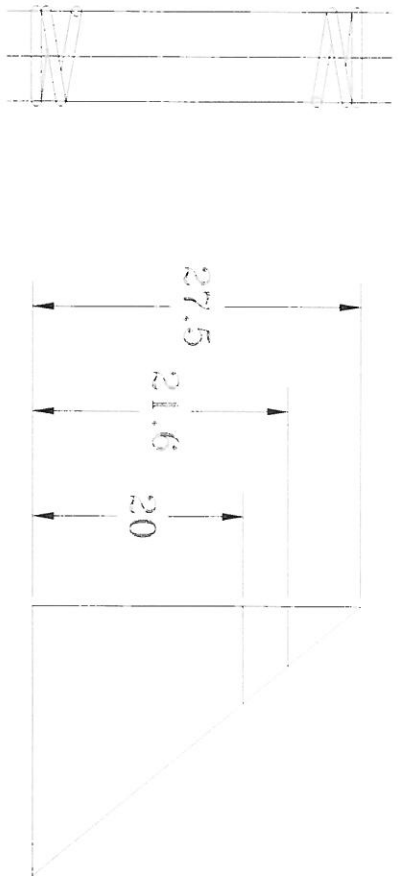
THIS DOCUMENT CONTAINS INFORMATION THAT IS CONFIDENTIAL AND PROPRIETARY TO PARKER. THIS DOCUMENT IS FURNISHED ON THE UNDERSTANDING THAT THE DOCUMENT AND THE INFORMATION IT CONTAINS WILL NOT BE COPIED OR DISCLOSED TO OTHERS OR USED FOR ANY PURPOSE OTHER THAN CONDUCTING BUSINESS WITH PARKER, AND WILL BE RETURNED AND ALL FURTHER USE DISCONTINUED UPON REQUEST BY PARKER. COPYRIGHT PARKER. YEAR OF COPYRIGHT IS FIRST YEAR INDICATED ON THIS DOCUMENT. ALL RIGHTS RESERVED.

Control dimension	Control dimension
$\alpha$ = letter: sequence of control	$\alpha$ = letter: sequence of control
X = number: 1 - critical 2 - important	X = number: 1 - critical 2 - important
Symbol of control internal:  external: 	Symbol of control internal:  external: 
General tolerance: ISO 2768-m	General tolerance: ISO 2768-m



Revision	Date	Description	ECN/ECR N°	Check by	
04	05.12.2009	Update title block following Global Procedure D3-506 revision B.	GRP	CRC	
03	04.20.2009	New title block and drawing as per Global Procedure D3-506.	GRP	CRC	
Level	Date	Description	ECN/ECR N°	Check by	
Tol Sys	Original: 430420	Scale: 3 : 1	Material: AISI 303	Drawn by: GRP	Date: 04.29.2008
E	Owner: G	Format: A4	Treatment: -	Check by: CRC	Date: 04.29.2008
		Part designation	First user	Part N°/Drw N°	Part Rev Drw Rev
<b>CIC - FLUID CONTROL DIVISION</b>		<b>Tube &amp; nut - type 2</b> <b>M14x1</b>	<b>G</b>	<b>430420</b>	<b>04</b>





1	표면	G-200791-030
2	재질의 선 지름	d
3	COIL 외 바깥지름	Do
4	COIL 외 안지름	Di
6	총 권선수	12.0
7	중심 권선수	10.0
8	입력 변위	중심축
9	시공 높이	L0
10	특	1
	상	1
	시	2
	공	2
11	COIL 끝부분의 모양	CLOSED END
12	SPRING 강도	kg/mm
13	재질의 강도 단위계수	kg/mm <sup>2</sup>

1000 ~ 2000	0.5	1.2	3
515 ~ 1000	0.5	0.8	2
120 ~ 515	0.5	0.5	-
30 ~ 120	0.5	0.3	0.9
6 ~ 30	0.2	0.2	0.3
3 ~ 6	0.05	0.1	0.2
0.5 ~ 3	0.05	0.1	-

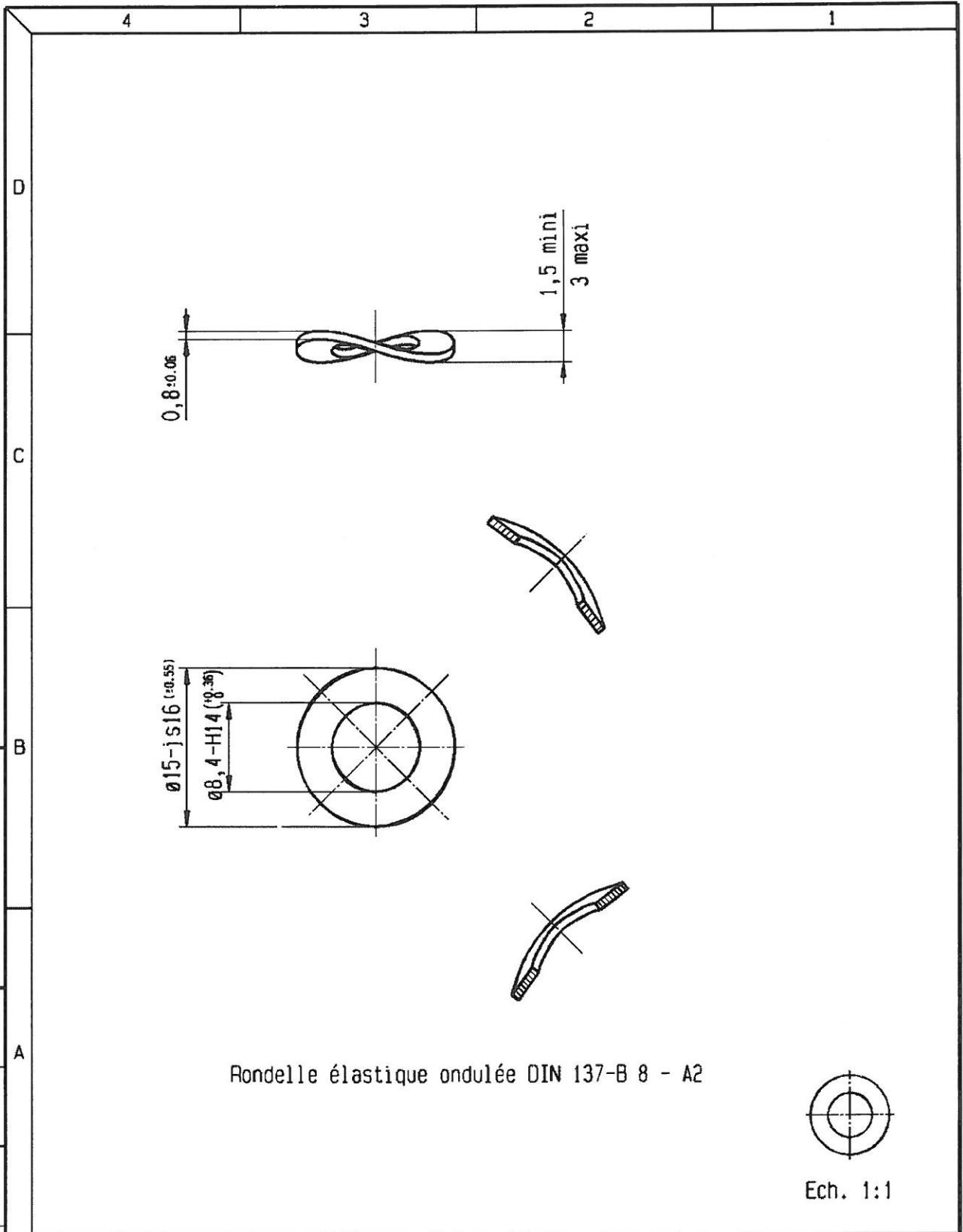
  

UNIT :	MATE	3RD ANGLE	SCALE
mm	SUS304/SP3	PROJECTION	1:1
PART NAME	SPRING	PWG. NO	G-200791-030
DESIGNED BY	H.J. PARK	CHECKED BY	S.H. SHIN
AUG.10.2012	AUG.10.2012	APPROVED BY	

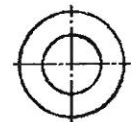
  

DIMENSION (mm)	1 st	2 nd	3 rd
TOLERANCE (%)			

**PARKER KOREA LTD.**



Rondelle élastique ondulée DIN 137-B 8 - A2



Ech. 1:1

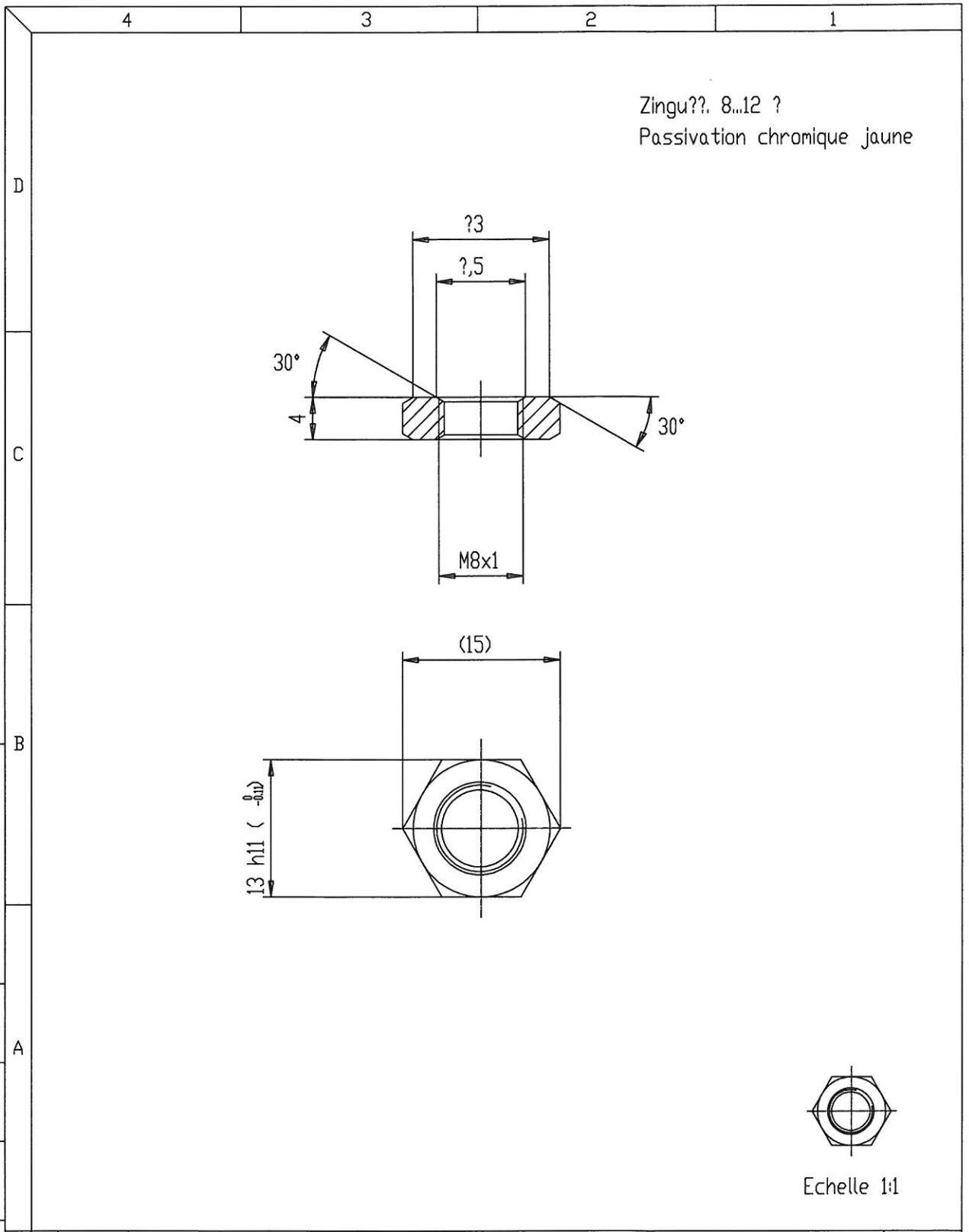
Dimensions without tolerance

0 to 10	0,1
> 10 to 30	0,15
> 30 to 80	0,2
> 80 to 180	0,25
> 180 to 360	0,3
> 360 to 500	0,35

REVISION	DATE	DESCRIPTION
4	14 05 2007	Passage de acier traité GEOMET à Inox A2
3	02 06 2006	Ajouté spécifications du traitement de surface
2	2 03 2006	Supp. "Zingué...et passivation.."; aj. "Tenue au brouillard..."
1	26 06 2000	REDESSINE

	This drawing must not be changed by hand <b>AUDROS</b>	FAM. PARTS	11.6	REVISION	4	14 05 2007	ddobretz	DRAWN BY	bstengel	31 12 1979
		APPROVALS	-	SCALE	1:1 - 2:1	CHECK BY	<i>lex</i>	23/05/2007		
PROJECTION		REPLACE ed. 17.2.77	MATERIAL	BN	<i>lex</i>	23/05/2007				

<b>RONDELLE ELASTIQUE ONDULEE</b>	 Parker Lucifer SA	A4	<b>488973</b>
-----------------------------------	-----------------------	----	---------------



Echelle 1:1

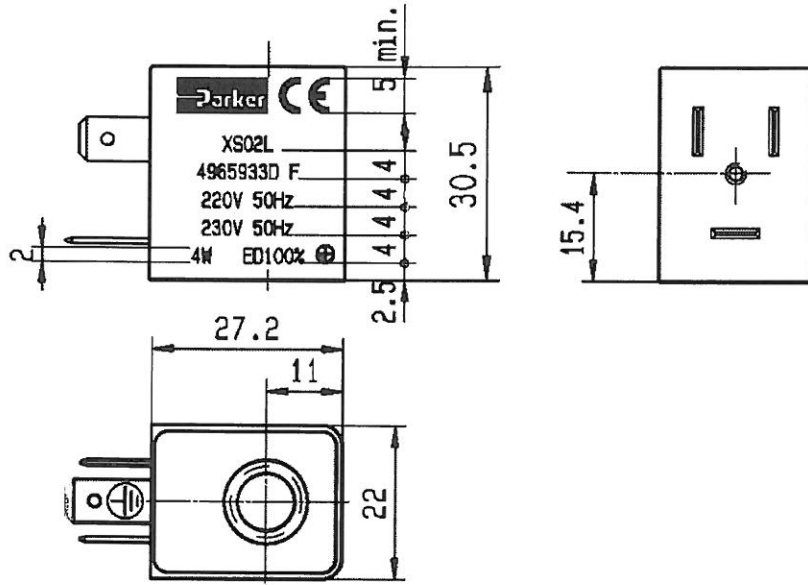
Dimensions without tolerance

0 to 10	0,1
> 10 to 30	0,15
> 30 to 80	0,2
> 80 to 180	0,25
> 180 to 360	0,3
> 360 to 500	0,35

	REVISION	6								STATUS		
		5										
		4										
		3	26.6.2000	REDESSINE								
	PROJECTION	AUDROS	REPLACE ed. 17.2.77	FAM. PARTS	11.6	REVISION	3	26 06 2000	bstengel	DRAWN BY	bstengel	17 02 1977
				APPROV ALS	-	SCALE	1:1 - 2:1			CHECK BY		
						MATERIAL				BN		
ECROU ISO 8675-M8x1-04-A2L				 Parker Lucifer SA				A4		484944		

With DIN 43650 B Plug = IP65

Stamped : WHITE



Voltage [Volts] ±15% Frequency [Hz]	Voltage Code		R ±7% à 20°C [Ohms]	Power (hot) [W] ED 100%	Note	Voltage [Volts] ±15% Frequency [Hz]	Voltage Code		R ±7% à 20°C [Ohms]	Power (hot) [W] ED 100%	Note
	Standard	Global					Standard	Global			
~/ Alternating Current / AC						= / Continuous current / DC					
24/50	A2	H	33	4		12/=	C1	A	21.5	5	
110/50 115/50	0A	J	740	4		24/=	C2	B	86	5	
220/50 230/50	3D	L	3100	4		-	-	-	-	-	

Class F 155°C Weight: 0.060 kg

DESCRIPTION ACCORDING TO DRAWING 496594 Equivalent Global Number **XS02**

Dimensions without tolerance

0 to 10	± 0,1
> 10 to 30	± 0,15
> 30 to 100	± 0,2
> 100 to 180	± 0,25
> 180 to 360	± 0,3
> 360 to 500	± 0,35

REVISION		4									
REVISION		3									
REVISION		2									
REVISION		1	06 08 2008	Ajouté No Global et marquage							
 PROJECTION	 AUDROS	FAM. PARTS	1.1.2.0		REVISION	1	6 08 2008	rperratt	DRAWN BY	ddobretz	1 01 2001
		APPROVALS	-		SCALE	1:1		CHECK BY	/el		27/11/2008
REPLACE		MATERIAL									
BN											
<b>COIL 22MM HP DIN 43650B</b>					 Parker Lucifer SA		<b>A4</b>		<b>496593</b>		